

# Capability Statement

Advitech Pty Limited



# About Advitech

## Engineering and Environmental Consulting Services

Advitech's talented team of engineers and environmental scientists collaborate with you to understand your technical, compliance and business needs.

We offer a unique and diverse blend of consulting services in Engineering, Environment, Project Management, Risk and Compliance.

Our experience extends across industry sectors, from resources, energy and manufacturing to agriculture, defence, education, performance venues and more.

Whatever your industry, whatever your needs, we will work closely with you to ensure the right technical outcome for your business.

Your  
challenge  
is our  
motivation

# We are proudly Emergent

Advitech is part of Emergent Group, a dynamic partnership of technical sciences companies working together to deliver practical operational solutions for Australian businesses, industries, and government.



**Advitech**

Engineering and environmental consulting



**Novecom**

Sensor networks, monitoring and industrial IoT



**Acubis**

Remote communications networks

Together, our Emergent Group companies love to explore challenges and uncover possibilities. We are engineers, scientists, analysts, technicians and systems specialists. We are focused on the challenges of today... and tomorrow. We're focused on you. We are Emergent Group.



# Advitech's Services



## Engineering Consulting

Mechanical, structural, civil, process  
3D modelling and design drafting  
Asset integrity and reliability  
Engineering compliance



## Environmental Consulting

Acoustics  
Air quality  
Contaminated land  
Environmental monitoring



## Project Services

Project management  
Strategic engineering support



## Risk and Compliance

Functional safety  
Risk assessment  
Hazardous chemicals  
Hazardous area classification



## Sustainability and ESG Consulting

Environmental, Social and Governance (ESG)  
Path to net zero  
Energy and Environment Management Systems  
Emissions reduction schemes  
Circular economy



## Applied Mathematics

Data analytics  
Decision support and automation  
Mathematical modelling  
Mathematical optimisation  
Operations research  
Statistical analysis

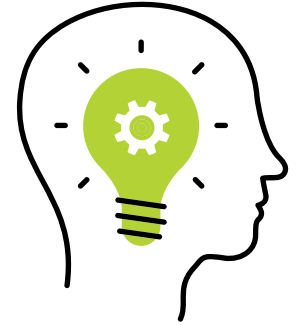




# Engineering Consulting

From engineering design to management of your structural assets, we work with you to provide innovative solutions.

Advitech draws on the multi-disciplinary skills of our staff to achieve the best technical outcomes for our clients. Our longstanding specialists provide the integrated engineering solutions required by today's industry sectors. Our work spans across mining, food and agriculture, defence, transport infrastructure, performance venues and more.



## Services

- Mechanical engineering
- Structural and civil engineering
- Process engineering
- Asset integrity and reliability
- Engineering compliance
- Design drafting and 3D modelling
- Theatre service audits



# Environmental Consulting

Manage your impacts and achieve your business goals.

Advitech's diverse team of scientists, ecologists and engineers work with you to manage your environmental impacts while balancing your business goals and achieving regulatory compliance.



## Services

- Planning and assessment
- Acoustics – noise and vibration
- Building acoustics
- Contaminated land assessment and validation
- Air quality and odour
- Compliance and monitoring
- NPI and EERs reporting



# Project Services

Management and technical support for projects of any scope and scale across multiple industry sectors and geographies.

Advitech's project specialists have delivered projects to defence, agriculture, mining, manufacturing, government, commercial clients and more.

Our services are underpinned by the strong engineering and technical skills within Advitech. We have the capability and flexibility to provide technical and functional support for any part of a project, in addition to the full project management function.



## Services

- Project management
- Scope development
- Cost estimation
- Procurement and contract management
- Commissioning
- Shutdown planning
- Engineering and technical support
- Feasibility investigations



# Risk and Compliance

Advitech works with you to protect the safety of your people, operations, environment and the community

Operating within the framework of international standards for risk management, Advitech can assist you to improve safety outcomes and mitigate risk across every context and industry.

Our team of engineers has specialised skills in functional safety, hazardous chemicals, hazardous areas and safety compliance.



## Services

- Functional safety
- SIL determination
- Risk assessment facilitation
- Hazardous chemicals auditing
- Hazardous area assessment
- Verification dossiers





# Sustainability Consulting



We provide end-to-end sustainability services that embed sustainability solutions into your business and culture.

We take a practical approach toward sustainability – what works for one company may not work for another. We work with you to embed solutions that are right for your business and not try to embed “run of the mill” solutions.

We above all are STEM providers backed by true industry leaders in engineering, science, mathematics, IoT, and agricultural practice and can help you navigate your sustainability journey in a practical, real-world, and pragmatic way.

## Services

- Environmental, Social and Governance (ESG) Strategy Development – Baseline Assessments, Materiality Assessments, Framework Development, Action Planning, Implementation and Measurement.
- Sustainability Reporting
- Pathways to net zero
- Energy and Environment Audits and Management Systems
- Carbon Accounting – GHG emissions tracking and inventory (scopes 1, 2, 3)
- Water and energy use
- Project sustainability
- Streamlining sustainability reporting (integration)
- Waste Management
- Emissions reduction schemes
- Strategy and action planning
- Sustainability Office program for SMEs
- Circular economy
- Lifecycle analysis assessments
- Sustainable procurement and supply chains



# Applied Mathematics

## Analytics and Optimisation – Creating value from your data

Advitech uses quantitative methods to help businesses with challenges such as managing inventory and demand; scheduling transportation; planning infrastructure design, expansion, maintenance and renewals; improving production planning, scheduling and distribution; supply chain modelling; and workforce planning.



## Services

- Data analytics
- Decision support and automation
- Mathematical modelling
- Mathematical optimisation
- Operations research
- Statistical analysis



# Meet Our Management Team



**Steven Smith**

Managing Director

02 4924 5400

[steven.smith@advitech.com.au](mailto:steven.smith@advitech.com.au)



**Paul Reynolds**

Chief Operating Officer

02 4924 5400

[paul.reynolds@advitech.com.au](mailto:paul.reynolds@advitech.com.au)



**Craig Wellings**

Manager – Environmental Services

02 4924 5400

[craig.wellings@advitech.com.au](mailto:craig.wellings@advitech.com.au)

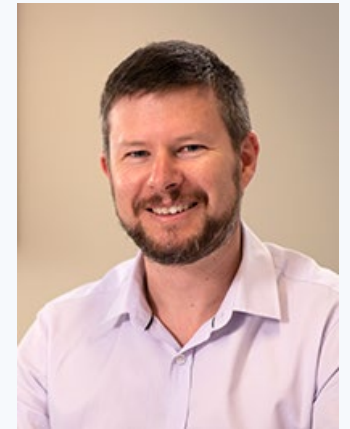


**Abby Yates**

Principal – Sustainability &  
Environmental Management

02 4924 5400

[abby.yates@advitech.com.au](mailto:abby.yates@advitech.com.au)



**Phil Howlin**

Principal – Mechanical Engineering

02 4924 5400

[phil.howlin@advitech.com.au](mailto:phil.howlin@advitech.com.au)



# Meet Our Management Team



**Alan Cross**

Principal – Risk and Functional Safety

02 4924 5400

[alan.cross@advitech.com.au](mailto:alan.cross@advitech.com.au)



**Ramesh Ramamurthy**

Group Lead – Structural Engineering

02 4924 5400

[ramesh.ramamurthy@advitech.com.au](mailto:ramesh.ramamurthy@advitech.com.au)



**Keelan Hamilton**

Group Lead – Drafting & 3D Modelling

02 4924 5400

[keelan.hamilton@advitech.com.au](mailto:keelan.hamilton@advitech.com.au)



**Carl Fung**

Group Lead – Process Engineering

02 4924 5400

[carl.fung@advitech.com.au](mailto:carl.fung@advitech.com.au)



**Damon Pieterse**

Group Lead – Acoustics

02 4924 5400

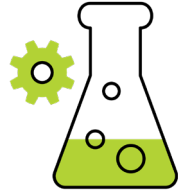
[damon.pieterse@advitech.com.au](mailto:damon.pieterse@advitech.com.au)



# Sectors We Support



**Agriculture and Food  
Production**



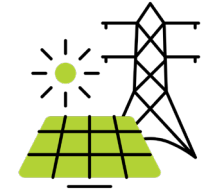
**Chemical Processing  
and Manufacturing**



**Defence**



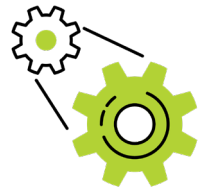
**Education  
Infrastructure**



**Energy**



**Local Government**



**Manufacturing**



**Materials Handling**



**Mining**



**Performance Venues  
and Theatres**



**Public Space  
Protection**



**Public Utilities**



**Recycling and  
Sustainability**



**Research and  
Academia**



**Transport  
Infrastructure**



# Trusted By







7 Riverside Drive  
Mayfield West, Newcastle  
NSW 2304, Australia



(02) 4924 5400



[mail@advitech.com.au](mailto:mail@advitech.com.au)



[advitech.com.au](http://advitech.com.au)



**advitech**